

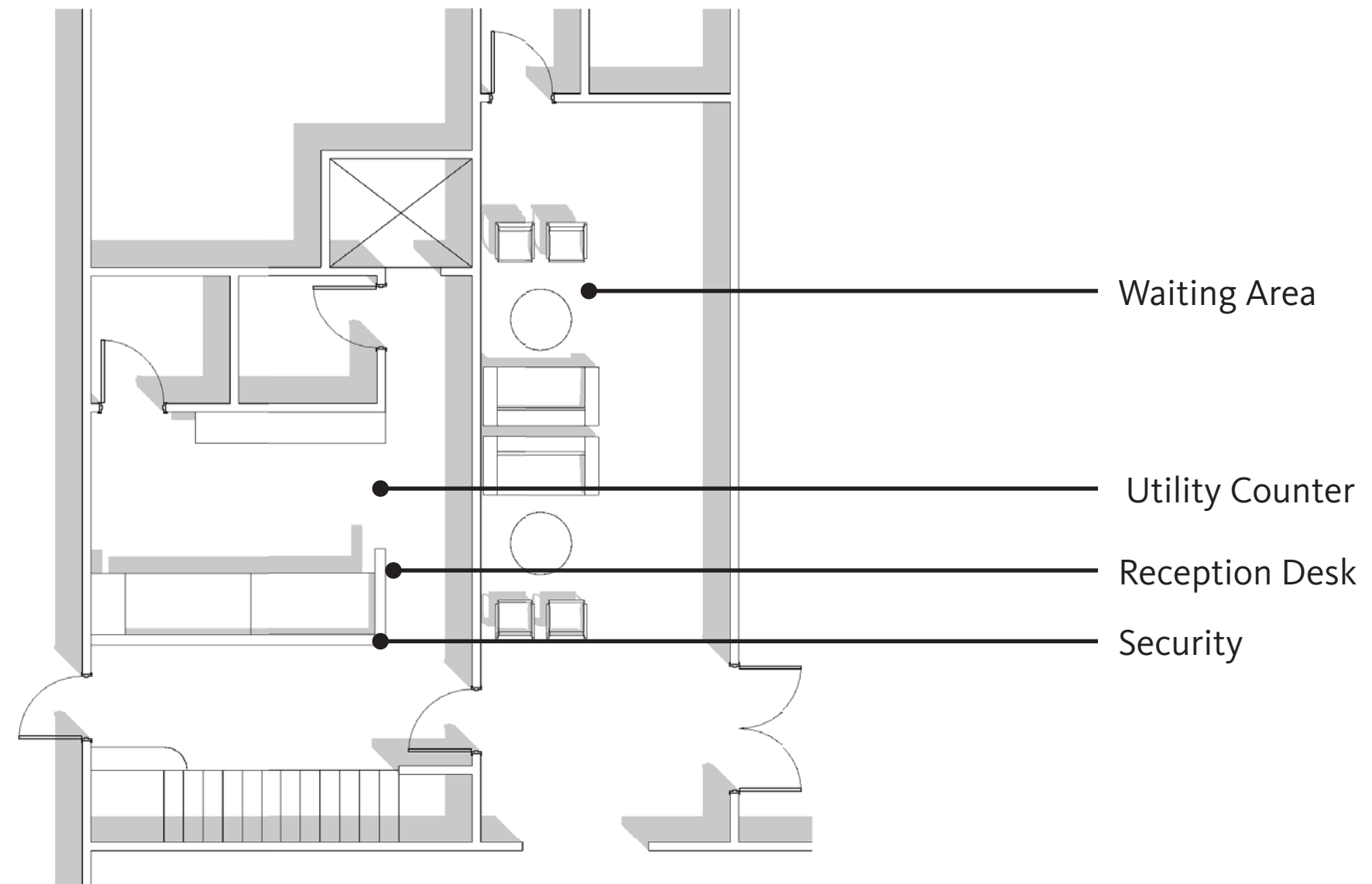
# PHILANTHROPY BY DESIGN

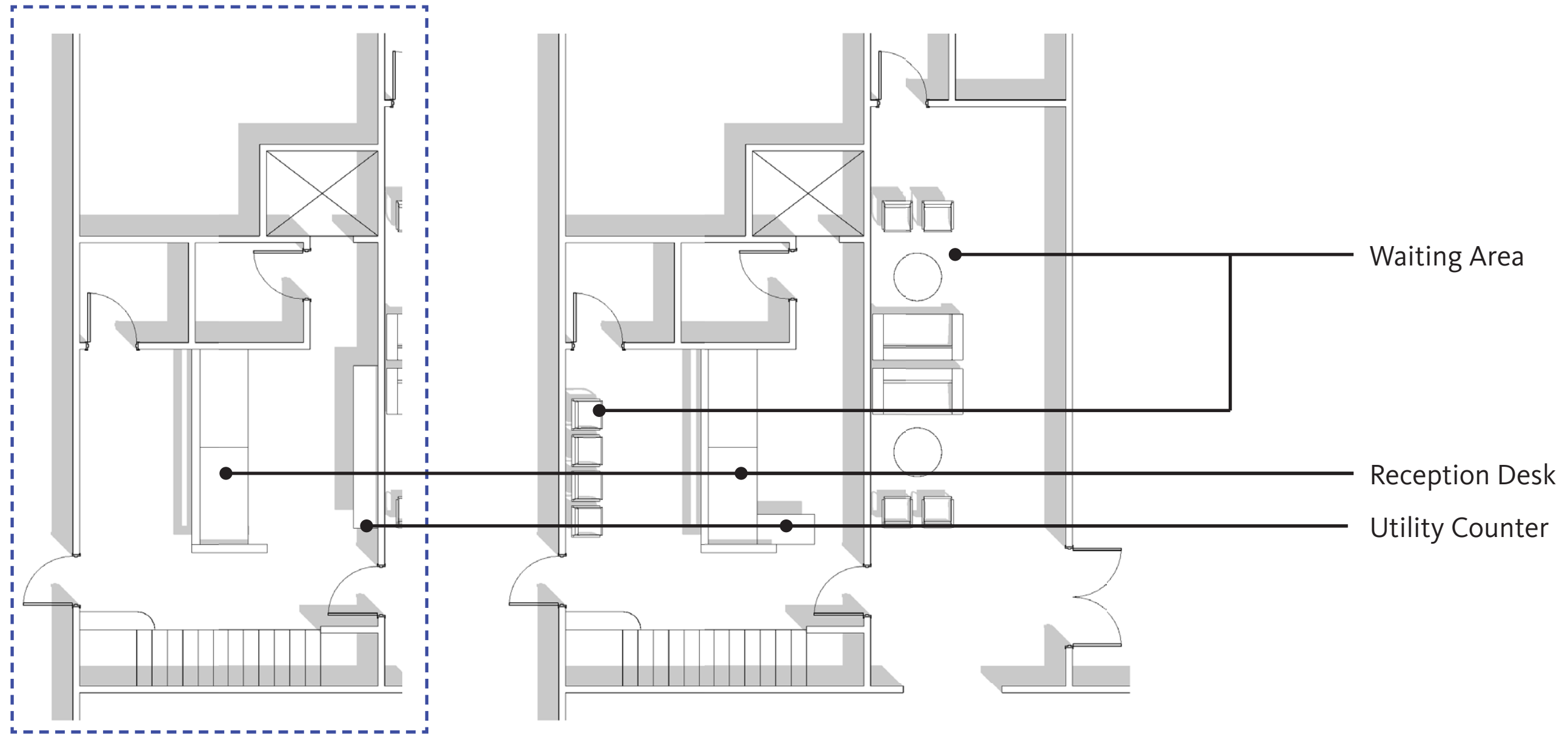
---

Whistlestop February 02, 2018

| Space     | Issue              | Recommendation  |
|-----------|--------------------|---|
| Reception | Desk Functionality | Purge existing credenzas - use the back credenza for 15 Jordan project; new desk with lockable storage pedestals, a transaction counter and ADA access.                 |
|           | Supplies storage   | Utilize small room to house laminator, postage machine, cutter, etc. Split the functions that happen at the desk vs in a storage/supply room                            |
|           | Waiting Area       | Review plan options, reconsider operation - can the driver come into the arcade to inform waiting people so the reception isn't crowded?                                |
|           | Security guard     | Provide ergonomic stool to be located near the door   |
|           | Look and Feel      | Paint walls, rearrange frames and marketing material, consider decals and graphics to brighten up the entry space. PBD to provide design                                |
|           | Signage            | Rework signage with Whistlestop - workshop locations and budget for signage overhaul. Clean front door, identify which signs can be collated and reworked.              |
| Arcade    | Look and Feel      | Paint walls, rearrange frames and marketing material, consider decals and graphics to brighten up the entry space. PBD to provide design options after layout selection |
|           | Signage            | Café and ADA entry to be clarified with graphics and signage.   |
|           | Waiting Area       | Utilize 'library' area and existing furniture with some new pieces to create a more welcoming waiting area  |

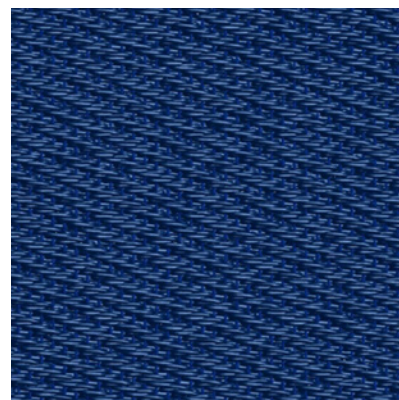
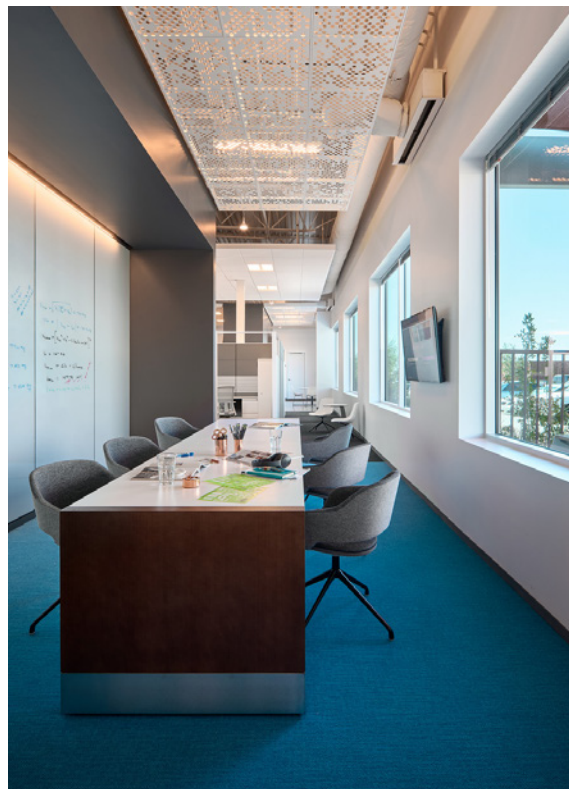
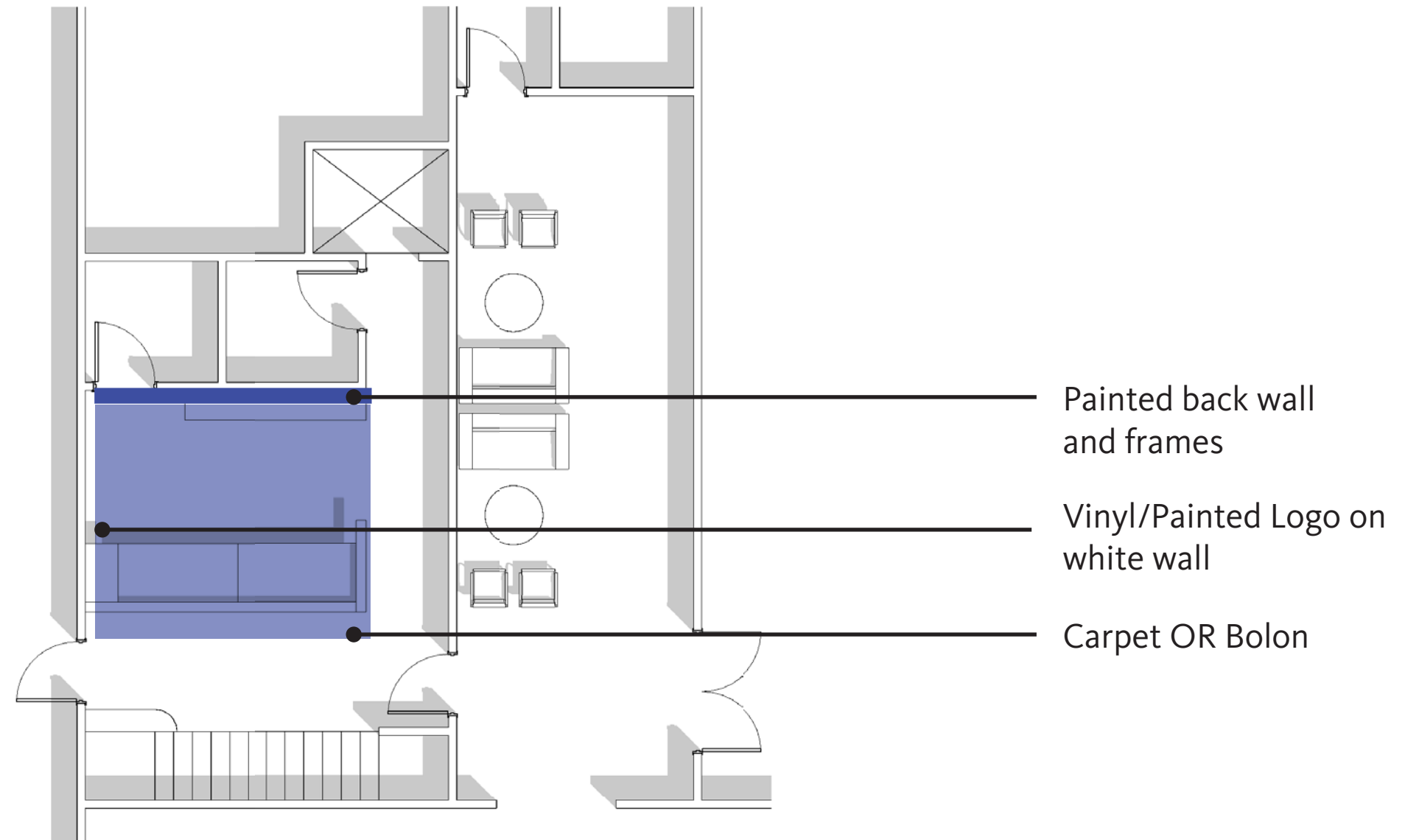
# PLAN | OPTION A





Alternate Layout

# BRANDING | WALLS&FLOOR



# BRANDING | ACCENTS

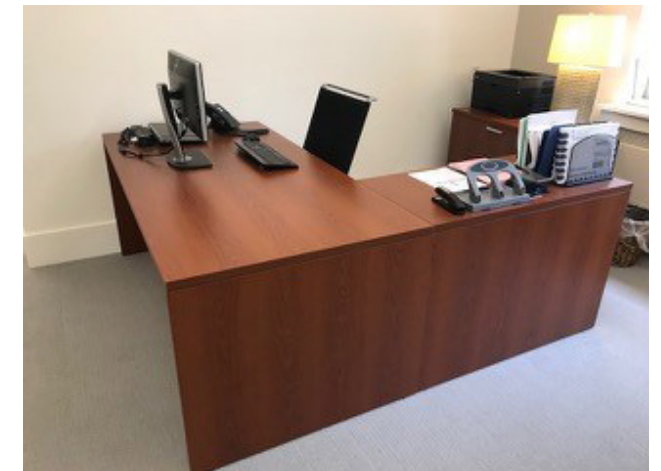
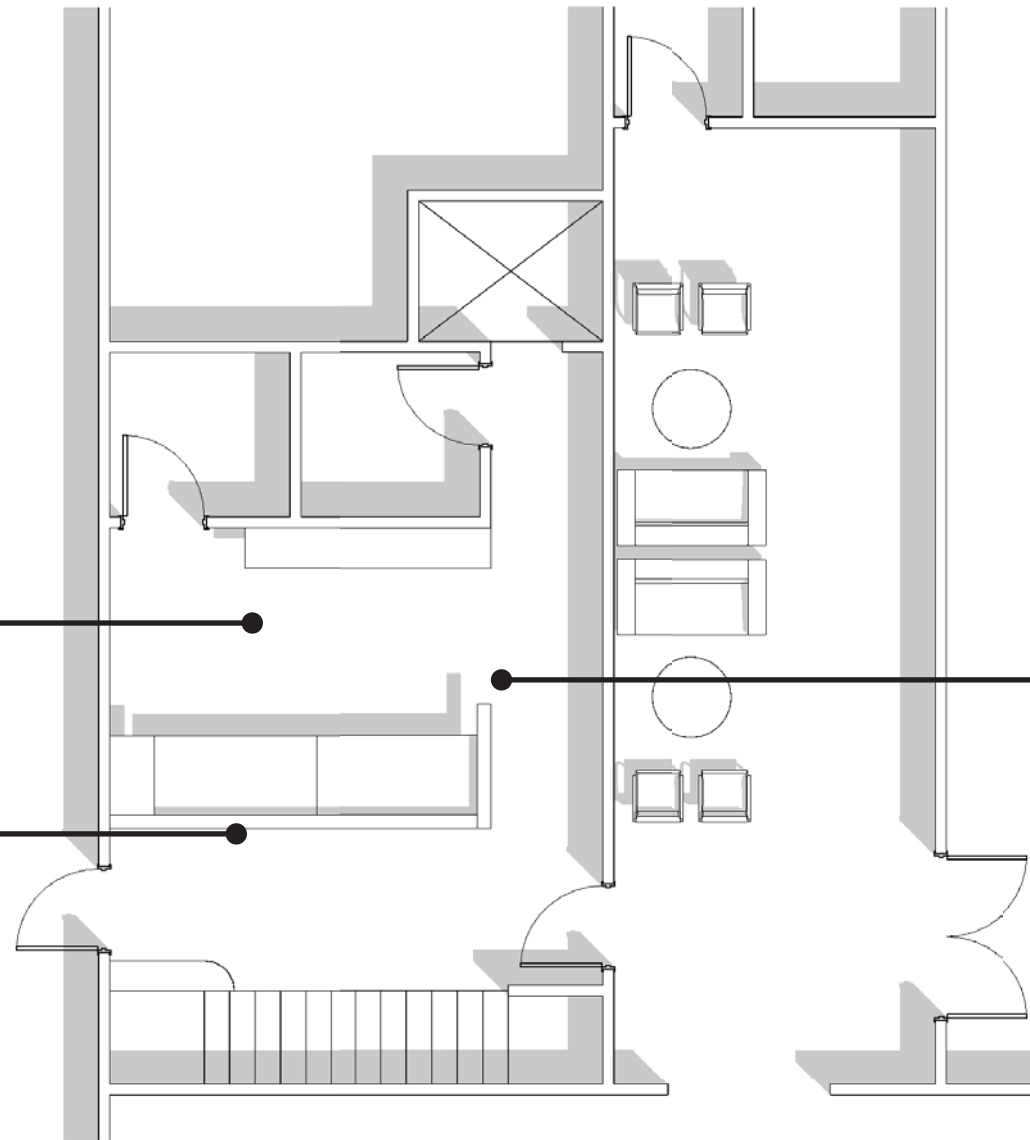


Ikea Eket storage combination





Ikea Eket storage combination

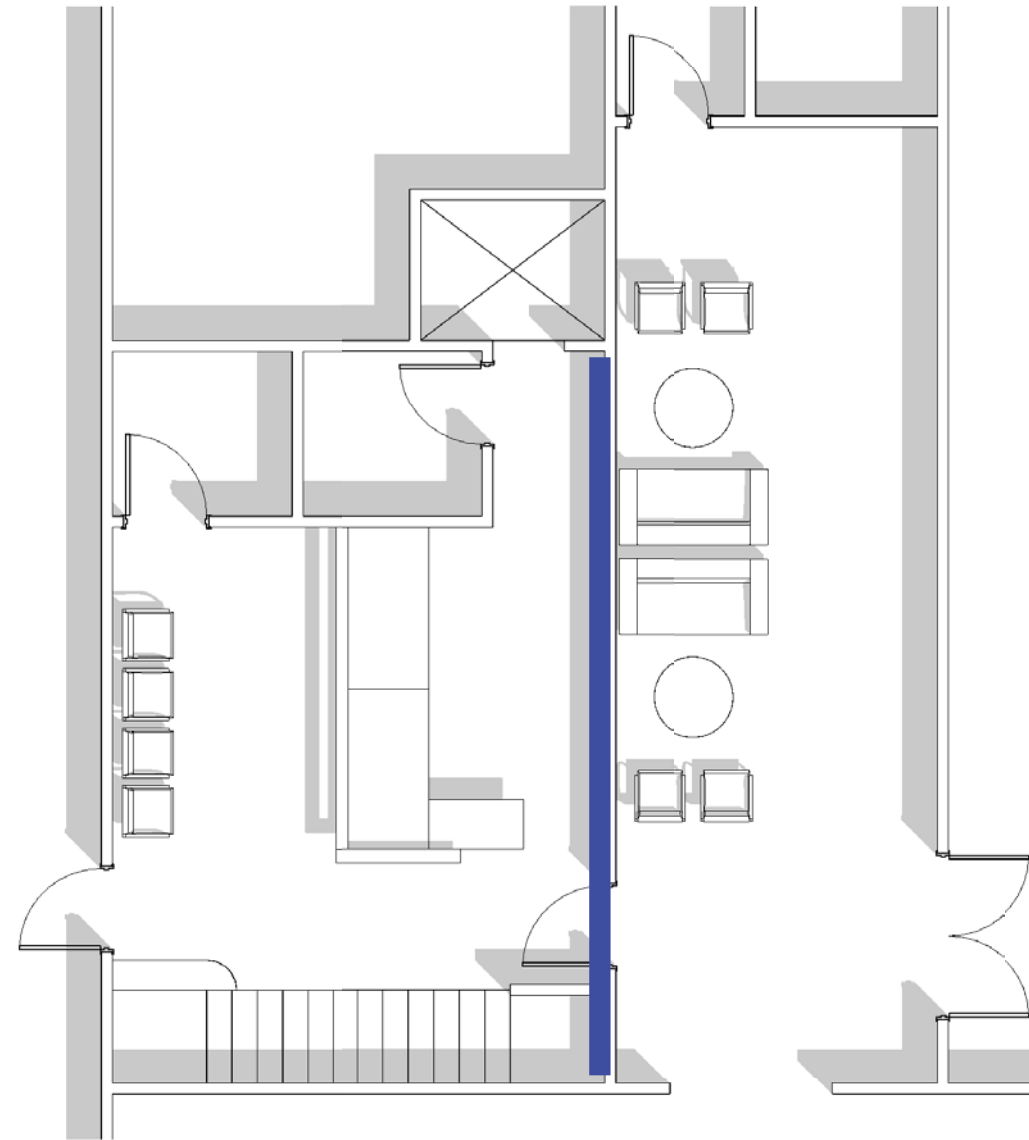




Bistro style chair [efurnituremax.com](http://efurnituremax.com)



Ikea Eket storage combination







Porter Intl design - Sitswell sofa  
\$500



Living Spaces - Mercury Mandarin  
Armchair  
\$150



Shades of Light - Minimalist Lamp  
\$190





Paint Existing wood furniture





## Waiting Area

**Bulletin Board:**  
Curate, organize & de-clutter forms and notices. Relocate for new design. Inform, not overwhelm!

**Entry Doors:**  
Simplify & remove stickers. Investigate door operators for easier entry.