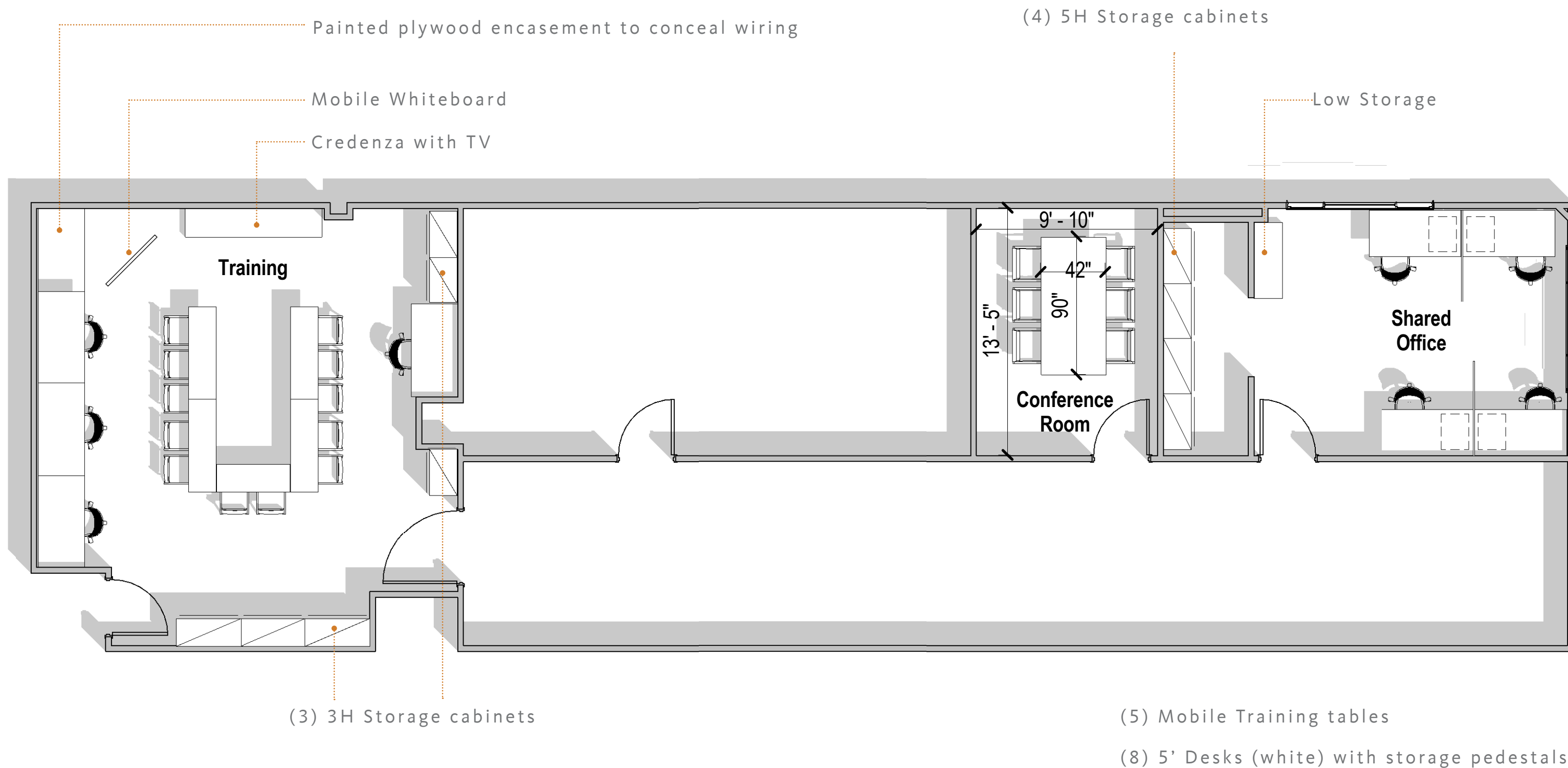


PHILANTHROPY BY DESIGN

Whistlestop Plan Update

September 12, 2017



FURNITURE WISHLIST

(1) CREDENZA - FOR STORAGE AND TV

(1) MOBILE WHITEBOARD

(3) 30" FILING / STORAGE UNITS 3H *

(3) 42" FILING / STORAGE UNITS 3H *

(4) 36" FILING / STORAGE UNITS 5H *

(8) TASK CHAIRS

(6) CONFERENCE CHAIRS

(1) 90" X 42" CONFERENCE TABLE

(1) SMALL STORAGE CREDENZA (MAX LENGTH 4')

(3) WORKSTATIONS (PREFERREDLY BENCHING WITH 5' PER PERSON)

(1) 5' DESK W/ STORAGE PEDESTAL

~~(4) 5' DESKS W/ STORAGE~~

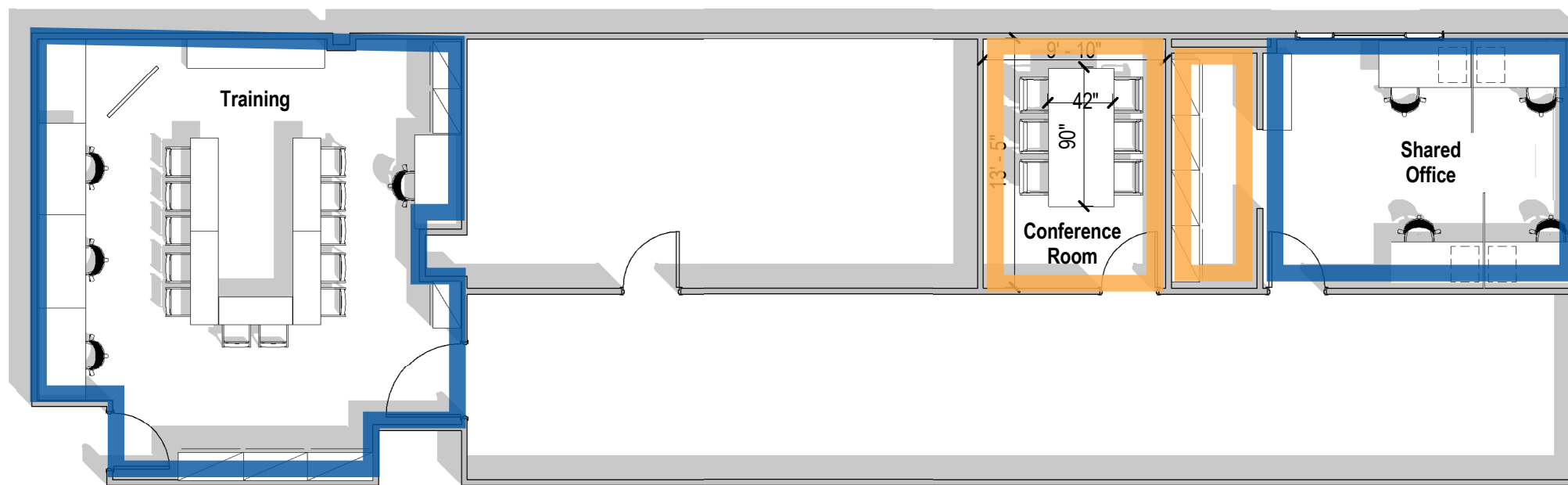
~~(4) 60" TRAINING TABLES (3 tables available, need to purchase the 4th from Kimball)~~

~~(1) 48" TRAINING TABLE~~

* STORAGE DIMENSIONS AS SHOWN ON PLAN, WE'RE OPEN TO OTHER COMBINATIONS - BOOKSHELVES, TALL CABINETS, CUPBOARDS, ETC.

Please Note: Striked items are already available for donation.

WALL TREATMENT

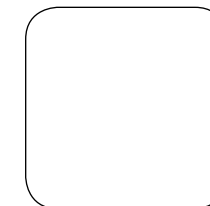


WAINSCOT HEIGHT ACCENT PAINT



ORANGE: PPG 1197-6 FALL LEAF LRV 41
BLUE: PPG 1161-7 BRILLIANT BLUE LRV 8

GENERAL PAINT (WALLS, CEILINGS, DOORS)



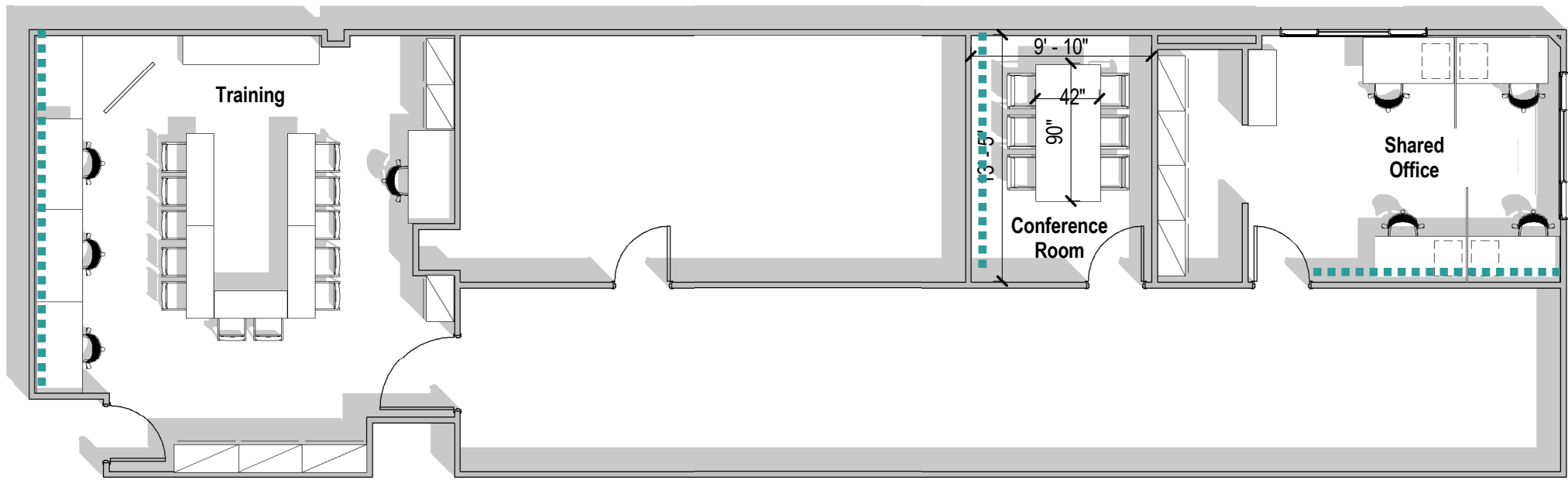
WHITE: KELLY MOORE, KMW43,
WHITEST WHITE.

EGGSHELL AT WALLS, FLAT AT CEILINGS,
SEMIGLOSS AT DOORS AND FRAMES

NEUTRAL GRAY CARPET TILE



CELEBRATING THE SUCCESS



Artfully Arranged Marketing Frames

